

# *Auditioning for*



If you're reading this, you've signed up for an audition with The New Blue!

The New Blue is a historic organization at Yale. Yale first admitted women as undergraduates in 1969, the same year that The New Blue was formed—making us not only Yale's first all-women's a cappella group, but the first all-women's organization of any kind on campus. "Old Blue" was out, New Blue was in. Our archives are full of beautiful and empowering moments from those pivotal years, and we continue to proudly and excitedly contribute to our group's rich history. Now a mix of women and gender-expansive students, we sing soprano-alto songs that are arranged by our own members—everything from haunting folk music, to jazz and blues, to today's pop radio hits.

Inside this folder you'll find everything you need to audition with us. If you have any questions, feel free to reach out to our rush managers or musical directors. We can't wait to meet you!

Love,

*The New Blue*

## **Inside this Folder:**

Audition Overview  
New Blue Contact Information  
Meet the New Blue 2024-2025  
"Make You Feel My Love" Sheet Music

# Audition Overview

Here's a rundown of what to expect in your audition!

- **Vocal warm-ups**

We'll take you through a few basic vocal exercises to get your voice moving and hear its range, size, and color.

- **Ear exercises & sight-reading**

Don't worry if you're not an experienced sight-reader. We'll help you out with this section if you'd rather not read on your own.

- **Ensemble exercise: "Make You Feel My Love"**

Take a look at the sheet music in this folder and prepare whichever part of the quartet you feel is the best fit for your voice (feel free to learn more than one if you're not sure). To help you prepare, audio clips of each part are available on our website, [www.newblueofyale.com](http://www.newblueofyale.com), under the Audition Info tab of our Rush page.

- **A solo of your choice! (45-90 seconds)**

Sing 45-90 seconds (a verse and a chorus is great!) of something that you can perform comfortably and confidently. It can be anything—a classical aria, a Broadway showstopper, your favorite song from your Spotify playlist, or "Happy Birthday."

*Visit [newblueofyale.com](http://newblueofyale.com) for more information, and search for "The New Blue" on Spotify or YouTube to hear us!*

## Contact Us

*For general rush communications:* newbluerush@gmail.com

*Rush Managers:*

**Maia Nehme (she/her):** maia.nehme@yale.edu

**Anna Lehman (she/her):** anna.lehman@yale.edu

**Anna Feldstein (she/her):** anna.feldstein@yale.edu

*Pitches (Musical Directors):*

**Alicia Shen (she/her):** alicia.shen@yale.edu

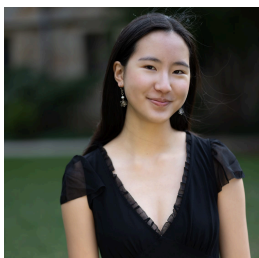
**Jen Cheung (she/her):** jen.cheung@yale.edu

*Business Managers:*

**Amiah Hanson (she/her):** amiah.hanson@yale.edu

**Jas Hollis (he/they):** jas.hollis@yale.edu

# Meet The New Blue of Yale



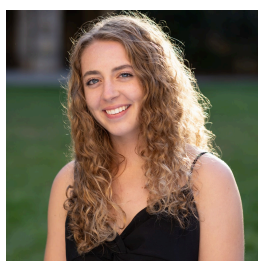
Alicia  
*Pitch*  
2026  
Soprano I



Jen  
*Pitch*  
2025  
Alto II



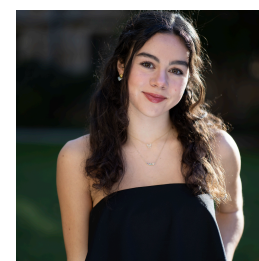
Jas  
*Business Manager | Tour Manager*  
2027  
Alto II



Amiah  
*Business Manager*  
2027  
Alto I



Maia  
*Rush Manager*  
2027  
Soprano II



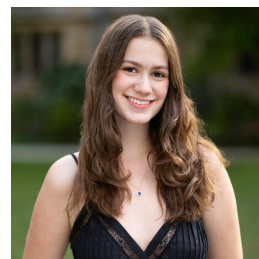
Anna  
*Rush Manager | Social Media Manager*  
2027  
Alto I



Anna  
*Rush Manager | Gig Manager | Assistant Pitch*  
2027  
Alto II



Anjali  
*Alumnae Coordinator | Gig Manager | Tour Manager*  
2026  
Soprano II



Sydney  
*Alumnae Coordinator | Tour Manager*  
2026  
Soprano I



$\text{♩} = 75$

SI  
doo noo doo noo hoo ooh doo noo noo ah

SII  
doo noo doo noo hoo ooh doo noo ah

AI  
doo noo doo noo noo noo hoo ooh doo noo ah

AII  
doo noo ba doo noo doo noo ah doo noo noo ba da da

5

S1  
doo noo noo noo doo noo noo doo noo noo noo doo

S2  
doo noo noo noo doo ba da doo doo doo noo noo doo

A1  
doo noo noo doo doo ba da doo doo doo noo noo doo

A2  
doom doom ba doom doom ba da doom doom ba da doom